

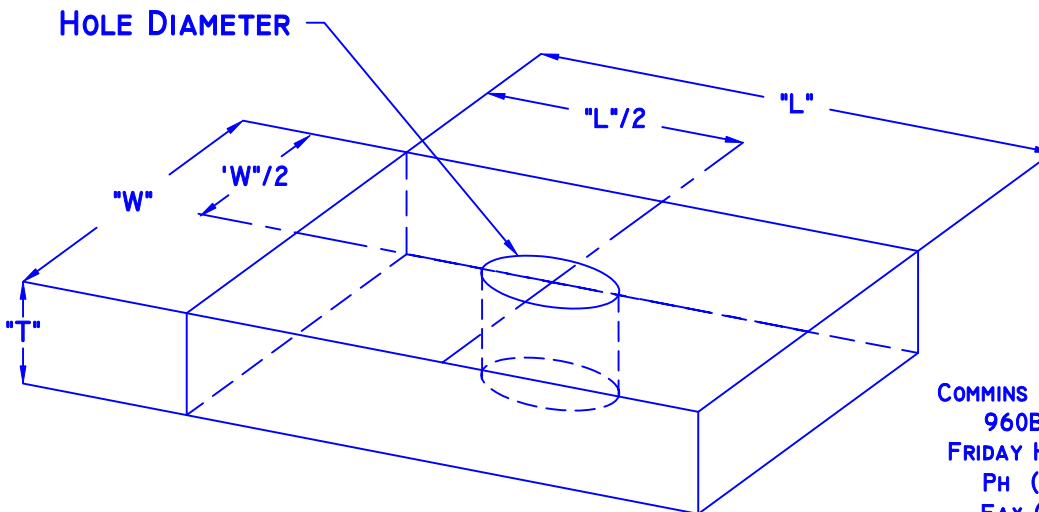
NOTES: 1. STANDARD COMMERCIAL TOLERANCES
 2. FINISH NONE
 3. IDENTIFICATION-EACH PART SHALL BE STAMPED WITH
COMMINS MANUFACTURING INC
AND THE PLATE PART NUMBER
AS SHOWN IN COLUMN "A"

REVISIONS				
ZONE	REV	DESCRIPTION	DATE	APPROVED
ALL	0	NEW	PENDING	AC
ALL	1	BEARING PLATE MFG INFO	9/23/04	AC
ALL	2	BEARING PLATE SIZES ADDED	10/07/04	AC

Commins Manufacturing Inc Plate Sizes

Stock Plates	Model No	Bearig Capacity (DFL)	Dimensions			Hole Size for	Weight Total (est)	Case Information		Pallet Information				
			Width "W"	Length "L"	Thickness "T"			Quant	Est Weight	Quantity	Total Cases	Est Wt		
	S4	3,906	2.5	2.5	3/16	1" (1-1/16")	0.33	100	33	3600	36	1188		
	S5	5,625	3	3	1/4		0.64	60	38.4	2160	36	1382.4		
XXX	S8	8,125	3.25	4	3/8		1.38	30	41.4	1080	36	1490.4		
XXX	S10	10,156		5	1/2		2.30	20	46.0	720	36	1656.0		
XXX	S12	12,188		6	5/8		3.46	12	41.5	432	36	1494.7		
XXX	S14	14,219		7	3/4		4.84	8	38.7	288	36	1393.9		
XXX	S16	16,250		8	1		7.36	6	44.2	216	36	1589.8		
X	S8L	8,125		4	3/8		1.38	30	41.4	1080	36	1490.4		
X	S10L	10,156		5	1/2		2.30	20	46.0	720	36	1656.0		
X	S12L	12,188		6	5/8		3.46	12	41.5	432	36	1494.7		
X	S14L	14,219		7	3/4	4.84	8	38.7	288	36	1393.9			
X	S16L	16,250		8	1	7.36	6	44.2	216	36	1589.8			
	S19	19,688	3.50	9	1	1-1/4" (1-5/16")	8.93	5	44.7	180	36	1607.4		
XXX	S22	21,875		10	1 1/4		12.40	4	49.6	144	36	1785.6		
	S24	24,063		11	1 1/4		13.65	4	54.6	72	18	982.8		
X	S26	26,250		12	1 1/2		17.85	4	71.4	72	18	1285.2		
X	S28	28,438		13	1 1/2		19.33	4	77.3	72	18	1391.8		
	L21	21,875		5.00	7		5/8	1-1/4" (1-5/16")	6.20	8	49.6	144	18	892.8
	L25	25,000			8		3/4		8.51	6	51.1	108	18	919.1
XXX	L28	28,125			9		1		12.75	4	51.0	72	18	918.0
XXX	L32	32,813	11		1	15.58	4		62.3	72	18	1121.8		

Larger plates may be substituted without restriction
 "L" plates fit into 4" and 6" walls. All other plates are restricted to 4" walls.
 Design based on ASD using the 2003 IBC . Plate material is A36 steel
 S8 to S16 may also be supplied to fit 1-1/4" rod. Add L after Name. Example S12L
 For HF (Hem-Fir) multiply value by 0.68. For SPF (Spruce-Pine-Fir) multiply value by 0.65
 X Non stock size often available



COMMINS MANUFACTURING INC.
 960B GUARD STREET
 FRIDAY HARBOR, WA 98250
 PH (360) 378-9484
 FAX (360) 378-9485

EXCEPT AS NOTED:
 DIMENSIONS ARE IN INCHES
 TOLERANCES ARE:
 ANGLE +/- 0.5° DECIMALS:
 .X ± .1
 .XX ± .01
 .XXX ± .005
 MACHINE FINISH 125
 REMOVE ALL BURRS
 BREAK SHARP EDGES .01
 THREADS PER MIL-S-7742 METHOD A

E:/CAT/SYSTEMS/PLATES		AUTO TIGHT SYSTEM PLATES			
		PLATES - BEARING			
		MFG. AND PKG. INFORMATION			
08/11/04	SIZE	FSCM NO.	DWG NO.	REV	2
BY: AL COMMINS	SCALE	NONE	10/07/04	SHEET	SHEET 1 OF 1