

THE AUTOTIGHT[®] ROD HOLDOWN SYSTEM VS TRADITIONAL HOLDOWNS

The AutoTight[®] Rod Holddown System outperforms traditional holdowns in every way.

Installation ease, capacity, cost and performance.

Installation ease: Traditional holdowns require a floor to floor connection and a quantity of horizontal bolts. Bolting requires the installer to drill a number of horizontal holes into the studs and to counterbore the bolt heads. (See drawing at the right). The top illustration shows the bolt head counterbored into the studs. This operation is slow, costly and reduces the stud performance. The middle Holdown connection shows the bolt head against the stud surface. These installations are wrong because the bolt threads are bearing against the wood at the point of maximum loading and the bolt will interfere with the installation of the vertical rod. The Holddown connection at the bottom is correct for the bolt placement but the bolt threads interfere with the perimeter of the shear wall. This is difficult connection. Average installation time of 1 hour per Holdown!

Performance: consists of three elements, tensile capacity, Shrinkage capacity and Deflection at rated load.

<u>Tensile Capacity:</u>	AutoTight [®] load rating	=	11,780 lbs.
	HD 10A load rating	=	9,900 lbs.
<u>Shrinkage Capacity:</u>	AutoTight [®]	=	1.1" .
	HD 10A	=	None
<u>Deflection at rated capacity:</u>	AutoTight [®]	=	0.231".
	HD 10A	=	1.224".

The AutoTight[®] system is 5 times stiffer.

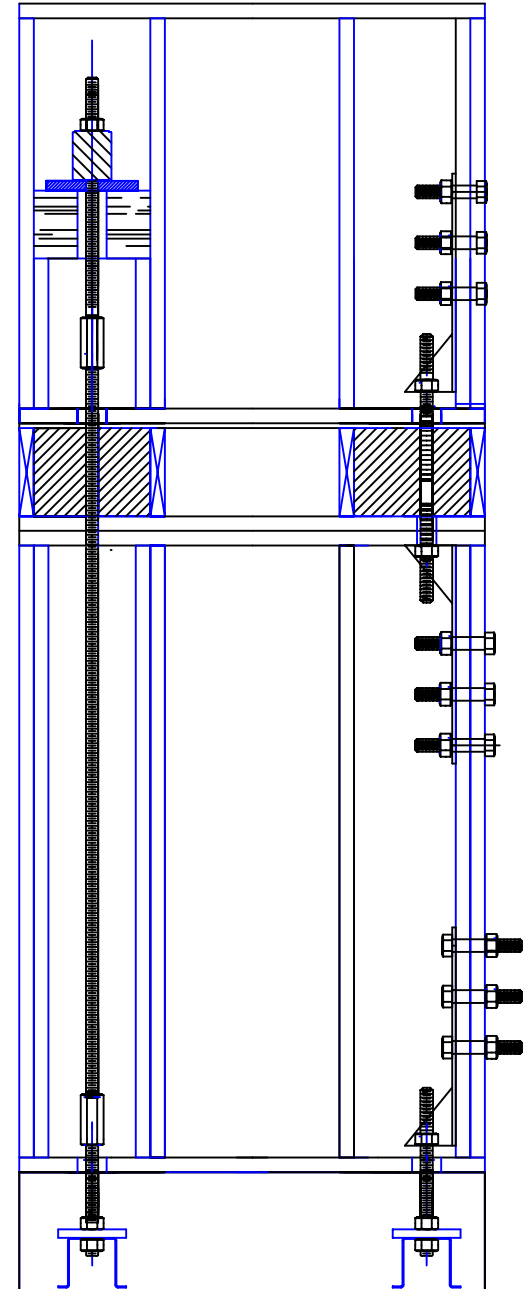
Installation Speed:

AutoTight [®]	=	15 minutes.
HD 10A	=	2 hours +

AutoTight[®] installs 8 to 12 times faster!

Cost Comparison:

	Commins AutoTight [®]	Traditional Holdowns
Market Price:	\$ 61.46	\$ 87.12
Installation Cost	\$ 9.00	\$ 63.00
Total Cost:	\$ 70.46	\$ 150.12



AutoTight[®] - Stronger, Stiffer, Faster: There is no comparison.

**COMMINS MANUFACTURING INC
960B GUARD STREET,
FRIDAY HARBOR WA 98250**

**PHONE: (360) 378-9484
FAX: (360) 378-9485
WWW.COMMINSMFG.COM**